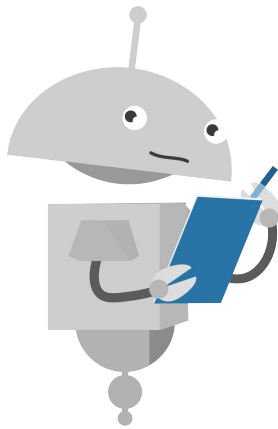


## Educator Information and Directions

### Student Objectives

1. Students will be able to distinguish between literal meaning and figurative meaning.



### DAY 1

- Watch the video lesson and complete the **Video Guided Notes**.
- Complete the **Literal or Figurative Sort**.

### DAY 2

- Complete the **Warm-Up**.
- Complete **Literal and Figurative Illustrations**.
- Complete **Online Practice**.

### Suggested Reward

Use your account to reward 100 Gold/\$coops for each worksheet completed in this packet.

## Extension Activities

**Mad Libs:** Find Mad Libs worksheets either online or from books. Play word games like “Mad Libs” or “Fill in the Blank,” and discuss the different meanings of words and how they can be used literally or figuratively.

**Drawing Conclusions:** Find a short passage with descriptive language, either online or from a book. Draw a picture to represent the figurative meaning of the passage. Share your drawings and explain the meaning behind it to an audience.



Complete While Watching Video



Example



Student Practice



Write It Out!

# Day 1

## Video Guided Notes

**Before the Video:** Read over the text below before watching the lesson video.



**Guided Notes:** While you are watching the video, fill in the information below as your notes.

Literal language...

- Uses \_\_\_\_\_ definitions and \_\_\_\_\_ of words
- \_\_\_\_\_ and \_\_\_\_\_

**Figurative language** is when words have \_\_\_\_\_ other than what is \_\_\_\_\_ the text.



# Literal or Figurative Sort: Part 1

**DIRECTIONS:** Cut out the boxes below and sort each statement, classifying it as either literal or figurative. Once you are done sorting, use the “Literal or Figurative Sort: Part 2” page (p. 4) to glue each statement under the correct category.

The sun is a star located at the center of our solar system.

The sun is a shining beacon of hope in an otherwise dark sky.

The Eiffel Tower was a giant exclamation point in the Parisian landscape.

The Eiffel Tower is a 324-meter-tall wrought iron lattice tower located in Paris, France.

The human brain is the central organ of the human nervous system.

The human brain is the engine that drives us to be the best version of ourselves.

The Grand Canyon models its majestic natural wonder and humbles us with its vastness.

The Grand Canyon is a steep-sided canyon located in Arizona, United States. It is 446 km long and up to 29 km wide.

The *Mona Lisa* is a 16th-century portrait painting by Leonardo da Vinci.

The *Mona Lisa*'s enigmatic smile is a puzzle wrapped in a mystery.

The Great Wall of China is a silent sentinel that has stood guard over the Chinese people for centuries.

The Great Wall of China is large, making it the longest wall in the world.

# Literal or Figurative Sort: Part 2

**DIRECTIONS:** Use this page to glue your sorted literal and figurative examples from the “Literal or Figurative Sort: Part 1” page (p. 3).

LITERAL	FIGURATIVE

# Day 2

## Warm-Up

**DIRECTIONS:** Read each statement below and write the letter “L” if it is a literal statement and “F” if it is a statement using figurative language.

Statement	Literal Statement or Figurative Language
Justin has a heart of stone.	
As the Earth rotates, the sun rises in the east and sets in the west.	
An apple is a round, crisp fruit.	
My brother is a thorn in my side.	
The sky is a brilliant and clear shade of blue.	
Gary is a wolf in sheep’s clothing.	
Kelly is a ray of sunshine.	
She was a fish out of water.	
There is always a silver lining to even the worst of situations.	

## Literal and Figurative Illustrations

**DIRECTIONS:** Read each statement below, and share an image that represents the figurative meaning of the sentence and an image that represents the literal meaning. You may also write a description of what a figurative and a literal interpretation of the statement could look like.

Cameron has a heart of gold.

Figurative Meaning	Literal Meaning

Issa is a couch potato.

Figurative Meaning	Literal Meaning

Morgan is a hothead.

Figurative Meaning	Literal Meaning