

Educator Information and Directions

Student Objectives

1. Describe the form and structure of a haiku.
2. Compose a haiku poem about nature.

DAY 1

- Watch the **Video Lesson** and complete your **Guided Notes**.
- Complete the **Lesson Reflection**.
- Complete **Online Practice 1**.

DAY 2

- Complete the **Warm-Up**.
- Do the **Complete the Haiku** assignment.
- Complete **Online Practice 2**

DAY 3

- Complete the **Nature Walk: Part 1 and 2** assignment.
- Complete the **Online Assessment**.

Suggested Reward

Use your account to reward 100 Gold/\$coops for each worksheet completed in this packet.

Extension Activities

Create a Haiku Journal: Students can add journaling through haiku as part of their routine. At the end of each day, they may write a haiku that summarizes the events of that day.

Mood Haiku: Students can create haikus that illustrate different moods and connect it to elements of nature. For example, students can create a haiku that connects snow to the feeling of tranquility.



Complete While Watching Video



Example



Student Practice



Write It Out!

Day 1

Guided Notes: Part 1



Guided Notes: While you are watching the video, fill in the information below for your notes.

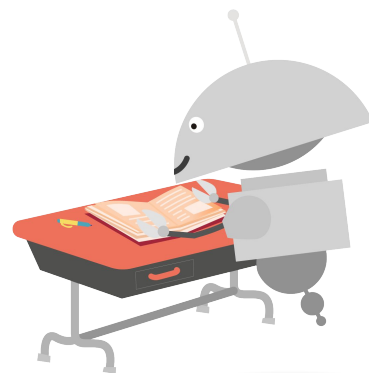
Haiku is a brief Japanese poem with three lines, usually about _____ or human experience.

Elements of Traditional Haiku:

- 5-syllable, 7-syllable, and 5-syllable format
- Focuses on _____
- Does not have _____ and regular sentence structure

Haiku Structure

5 syllables
____ syllables
5 syllables



Guided Notes: Part 2

Guided Notes: While you are watching the video, fill in the information below for your notes.



Prompt	Answer
<p>Golden yolk shining Buttery toast on a pan Morning feast divine</p>	<p>How can you tell this poem is a haiku?</p>
<p>Finish the haiku.</p> <p>How can you describe walking a dog at the park? Make sure to stick to 7 syllables in the second line and 5 syllables in the third line.</p>	<p>Furry paws strolling</p>

Lesson Reflection

DIRECTIONS: Consider what you have learned from today's video lesson. Follow the directions in the spaces below and fill in each blank. You may answer each section by drawing, writing, or talking to a loved one about your answer.



Today I learned....

Something I'm fascinated about is....

While learning this lesson I felt....

A question I have is...

Day 2

Warm-Up



DIRECTIONS: Use the pictures on the right to complete each of the unfinished haikus. Make sure that it follows the 5-syllable, 7-syllable, and 5-syllable format.



Frosty winter day



Scorching hot desert

Complete the Haiku!

DIRECTIONS: Read each haiku and determine how many syllables are in each line. Then, figure out the amount of syllables needed to keep the 5-syllable, 7-syllable, 5-syllable haiku format. Afterward, create an edited version of the haiku with the correct amount of syllables.



Haiku	Syllables in Each Line	Syllables Needed	Edited Haiku
Sun sets in the _____ _____ paint the sky's crest Day turns _____	4 4 2	1 3 3	<i>Sun sets in the <u>sky</u></i> <i><u>Soothingly</u> paint the sky's</i> <i>crest</i> <i>Day turns <u>into night</u></i>
Autumn leaves _____ Nature's _____ of red _____, _____ and red			
Waves crash on the _____ Foam and _____ below Eternal _____			
Moon _____ Stars _____ in the night sky Nature's _____			

Day 3

Nature Walk: Part 1



DIRECTIONS: Go on a nature walk with adult supervision, or think of a time you have been in nature. Pick three natural elements or items that may be around you. Use the spaces below to sketch your subject in the cloud, and write down notes or observations of the object in the lines.

Drawing or Description of Item

Drawing or Description of Item

Drawing or Description of Item

Nature Walk: Part 2

DIRECTIONS: Use your notes from p. 7 to create three haikus about your three chosen items or elements from your nature walk. Use the lines on the right to write your haiku, and use the spaces on the left to create a visual representation of the subject of your haiku.

A large, empty rounded rectangular box with a thin black border, intended for drawing a visual representation of the haiku's subject.

A large, empty rounded rectangular box with a thin black border, intended for drawing a visual representation of the haiku's subject.

A large, empty rounded rectangular box with a thin black border, intended for drawing a visual representation of the haiku's subject.
